

BIDDY TAROT



The Ultimate Guide to
Tarot Card Meanings:
Companion Workbook



WELCOME



The most beautiful thing we can experience is the mysterious. It is the source of all true art and science.

– Albert Einstein

My name is Bidy and I am a **certified professional Tarot reader with fifteen years' experience**, providing thousands of clients worldwide with insight and guidance on relationships, career, personal development and other important life matters. Drawing on my experience as a professional Tarot reader, I am here to help you understand everything you need to know to about the Tarot cards so that you can read the Tarot cards like an expert!

I have already helped over 1,000 people learn the Tarot card meanings with my original Tarot eBook and I have helped many more via my website at www.biddytarot.com and Tarot blog www.biddytarot.com/blog.

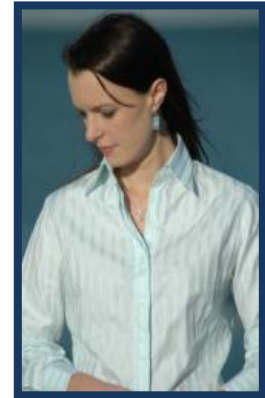
Now, with ***The Ultimate Guide to Tarot Card Meanings***, I am thrilled to provide you with literally **everything** you need to know about the Tarot card meanings so that you can read the Tarot cards like an expert.

This eBook wouldn't be what it is without the invaluable input of a handful of amazing, generous spirits who kindly reviewed the eBook prior to its release. I extend a heartfelt thank-you to Inge Brust, Robert Neal, Tamara Ashton, Patricia Darrow, Tara Michelucci, Cheryl Janzen, Diana Burbidge, Andrea Dunn, John LaCorte, Aasheesh Kumar, Lynne McGee, Nancy Doucette and Bryan Frew.

To all of my readers, visitors and friends out there, thank you for your continued support. I hope you enjoy the ***Ultimate Guide to Tarot Card Meanings*** and use the **Guide** to continue to build your own Tarot knowledge and wisdom.

Warm wishes,

Bidy



Get in Touch...

If, at any point while you are reading this eBook, you have any comments or questions, you can get in touch via...



biddy@biddytarot.com



www.facebook.com/biddytarot



www.biddytarot.com



www.twitter.com/biddytarot



www.biddytarot.com/blog

TABLE OF CONTENTS

A Word From Bidly	2
How to Use this Workbook	6
Getting Started	6
The Major Arcana	10
Overview.....	10
The Major Arcana Keyword Cheatsheet.....	11
Fool	12
Magician	16
High Priestess	20
Empress	24
Emperor.....	28
Hierophant.....	32
Lovers	36
Chariot	40
Strength	44
Hermit.....	48
Wheel of Fortune.....	52
Justice	56
Hanged Man	60
Death	64
Temperance.....	68
Devil.....	72
Tower.....	76
Star.....	80
Moon	84
Sun.....	88
Judgement	92
World.....	96
The Minor Arcana	100
The Suit of Cups	101
The Suit of Cups Keyword Cheatsheet	102
Ace of Cups	107
Two of Cups	107
Three of Cups.....	111
Four of Cups.....	115

Five of Cups	119
Six of Cups.....	123
Seven of Cups	127
Eight of Cups.....	131
Nine of Cups	135
Ten of Cups.....	139
Page of Cups	143
Knight of Cups.....	147
Queen of Cups	151
King of Cups	155
The Suit of Pentacles.....	159
The Suit of Pentacles Keyword Cheatsheet.....	160
Ace of Pentacles	161
Two of Pentacles	165
Three of Pentacles.....	169
Four of Pentacles.....	173
Five of Pentacles.....	177
Six of Pentacles.....	181
Seven of Pentacles.....	185
Eight of Pentacles	189
Nine of Pentacles.....	193
Ten of Pentacles	197
Page of Pentacles.....	201
Knight of Pentacles.....	205
Queen of Pentacles	209
King of Pentacles	213
The Suit of Swords	217
The Suit of Swords Keyword Cheatsheet	218
Ace of Swords	219
Two of Swords	223
Three of Swords.....	227
Four of Swords.....	231
Five of Swords	235
Six of Swords.....	239
Seven of Swords	243
Eight of Swords.....	247
Nine of Swords	251
Ten of Swords	255

Page of Swords	259
Knight of Swords.....	263
Queen of Swords	267
King of Swords	271
The Suit of Wands.....	275
The Suit of Wands Keyword Cheatsheet	276
Ace of Wands.....	277
Two of Wands.....	281
Three of Wands	285
Four of Wands	289
Five of Wands	293
Six of Wands	297
Seven of Wands.....	301
Eight of Wands	305
Nine of Wands.....	309
Ten of Wands.....	313
Page of Wands.....	317
Knight of Wands	321
Queen of Wands.....	325
King of Wands.....	329
Additional Notes.....	333

HOW TO USE THIS WORKBOOK

The Ultimate Guide to Tarot Card Meanings: Companion Workbook is intended as an interactive, personal resource to help you to **unlock your inner Tarot reading potential** and **seek out your own intuitive wisdom**. In my *Companion Workbook*, I provide you with the opportunity to explore each Tarot card from your own perspective and to build your own personal “Ultimate Guide to Tarot Card Meanings”.

The *Companion Workbook* is essentially like a Tarot Journal, with lots of blank spaces for you to record your personal thoughts, insights, observations and notes about the Tarot cards. You may want to do this all in one go, devoting a specific amount of time to learn the Tarot cards. Or, you may build your *Companion Workbook* gradually over time, be it months, years or even decades. You may also use the *Companion Workbook* on your own or as part of a Tarot study group. The possibilities are endless!

The benefits of using your *Companion Workbook* are enormous. Not only are you learning from texts and other resources throughout the course of your Tarot study and workbook writing, but you are also applying your own personal experience to your learning journey. Relating your own experience to the Tarot increases your ability to develop the breadth and depth of understanding the Tarot. A true understanding of the Tarot cards will not stem from simply reading numerous texts, rather it will stem from gut instincts and personal intuition.

Getting Started

There really is no one ‘right’ way to getting started with your *Companion Workbook*. You may want to start with the keywords, or you may want to launch straight into each Tarot card. You may want to do everything at once, or you may want to just come back to your workbook from time to time. You may also have your own methods by which you want to generate your insights.

Nonetheless, as you work through each section of the Companion Workbook, you may find the following techniques may prove helpful to get you started.

Tarot Keyword Cheatsheets

Preparing your own Tarot keyword cheatsheets helps you become instantly familiar with each of the Tarot cards, and once you have created the cheatsheet, you then have a quick-reference card which you can easily refer to when you are reading Tarot. This is so much faster than having to flick through all of your favourite Tarot card meanings books and websites to find the right meaning.

To get started, choose a card from your Tarot deck to work with and begin to study it. What words or phrases come to mind? What images stand out? What is your general feeling from the card? If you are still very new to Tarot, read through a couple of different books or websites and look for common words or themes in the card meaning interpretations. Start jotting down every thought, idea, word, phrase or sentence that comes to mind. At this stage, you want to be brainstorming, so any idea is a good idea!

Once you have exhausted your options, then review your list and select 3-4 keywords or phrases that collectively represent your ideas. Enter this into your Tarot cheatsheet. Continue to work through each Tarot card until you have built your very own Tarot cheatsheet.

You may also like to wait another week or two, just in case you have new ideas on what keywords to include. Once you are happy with the final product, print out your new Tarot cheatsheet, laminate it and keep it with your Tarot cards for a quick-reference tool.

Major / Minor Arcana Overviews

Creating your own summaries for the Major and Minor Arcanas will help you to identify key patterns, themes and ‘stories’ in your readings. It will also help you to develop an even deeper understanding of the individual cards as you begin to see those patterns emerge.

To get started, consider each group of cards (i.e. the Major Arcana, Suit of Wands, Suit of Swords, etc.):

- What are the general themes of the Suit / Arcana?
- What keywords would you associate with the Suit / Arcana?
- What are the positive and negative aspects?
- What are the common symbols, images, colours, figures, etc. in the Suit / Arcana?
- What is the significance in a reading?
- What else comes to mind?

Tarot Card Quotes

Exploring and reflecting upon common quotes can be a great way to bring the key messages of your Tarot cards alive! This is more of a fun exercise rather than an integral part of your Tarot studies.

To get started, I recommend working with your keywords and even key phrases associated with each Tarot card. Then, head on over to a quotation website such as www.brainyquote.com or www.thinkexist.com and start searching! Or consult your favourite inspirational quotes book.

Alternatively, you may choose to let the quotes come to you. As you read various books, keep a note of inspirational quotes that add meaning to your Tarot cards, and jot them down in your *Companion Workbook* over time.

Tarot Card Description

The Tarot card description is your opportunity to explore the symbolism and imagery in a specific card. Furthermore, the Tarot card will often depict a 'story' that then informs the general meaning for the card. So, it is important to pay attention to these visual elements.

To get started, study the specific Tarot card for a few minutes, then consider:

- What 'story' is being told? What is happening in the card?
- Is there a person in the card? What does their expression tell you? What direction are they facing? What are they doing?
- What symbols are used in the card, and what do these symbols mean? (For a good starting point on Tarot symbols, go to <http://www.tarotteachings.com/tarotsymbols.html>)
- What colours are used in the card, and what do these colours signify?
- What are the astrological associations with the card (if astrology is your area of expertise)?

Upright Tarot Card Meaning

This is really the 'core' of your Tarot study – understanding and interpreting the upright Tarot card meanings. When you write about the Tarot card meanings, there are a number of ways you can do it. You may like to draw a card a day – draw one card each morning, reflect on it throughout the day, and write an entry on it during the evening. Or, you may wish to look at each card in order. For example, begin with the first card of the Major Arcana and move through until you reach the end. It is completely up to you.

To get started, look at your selected Tarot card and consider the following key aspects:

- Your first impression of the card. How do you feel when you see the card? Which images stand out to you?
- A detailed description of the characters, symbols and landscape (similar to what is suggested for the Tarot card description). Perhaps there are a number of important aspects of the card that you missed in your first glance. How do these change your view of the card?

- Specific details of the card such as corresponding astrological sign, Major or Minor Arcana, suit, numerological significance, and related element.
- A collection of interpretations and keywords from books and websites with Tarot card meanings.
- An experience, Tarot reading or a person you know who reminds you of the card you are studying.

Jot down your initial thoughts. Then, throughout the day / week / month / year, spend some more time reflecting on how the card relates to your personal experiences over that period of time. For example, you may be studying the Six of Pentacles. Perhaps you can donate money to charity or help a needy friend. Write down how this made you feel afterwards and if you noticed anything you would not normally associate with the activity.

Use your Tarot readings, too, to explore the meaning of the card. What significance does the card have in a particular reading, or a series of readings? For example, I found that the Three of Cups reversed nearly always came up in readings where there was an affair or a third party involved in a relationship. I now attribute that specific meaning to the card.

The Companion Workbook also includes space for context-specific meanings, such as in a relationship reading or a career reading. Here are some ideas to get you started:

Career, Work and Finances:

- What does the card mean if you are searching for work? What does it tell you about your current work situation?
- What career paths may be associated with the card?
- What does the card tell you about your financial situation?

Personality Types:

- Imagine you 'are' the card. What does it feel like to be this card?
- Write a 1-2 paragraph 'bio' of the card, or even write a letter to the character in the card
- What would it be like to meet this person/card?
- What are the positive and negative qualities?

Relationships and Love:

- What does the card mean if you are searching for love? In a relationship? Trying to fix a relationship?
- What does the card tell you about other types of relationships in your life (e.g. friends, family, colleagues, etc.)

Spirituality:

- What is the deeper spiritual message or lesson of the card?
- What does this card tell you about your own spiritual journey?

Wellbeing and Health:

- What does the card tell you about your general health and well-being? What might be some specific health issues associated with the card? (Remember, though, that you are most likely not a health professional, so always ensure that you do not give specific health advice, unless qualified)

Reversed Tarot Card Meaning

Since I began reading the Tarot professionally, I have always used reversed Tarot cards. Tarot card reversals provide you with the opportunity to expand and deepen the insight drawn from your readings. Take 78 Tarot cards, reverse a random selection through your shuffling and suddenly you have doubled your Tarot deck to 156 different messages that you can possibly draw from. It is easy to see how reversed cards can add a whole new layer to your Tarot reading.

Reversed cards can be interpreted in many different ways and this is what makes their usage in a reading even more interesting. It moves the reading into a multidimensional space where there is light and shade, simplicities and complexities, highs and lows. It allows you, as the reader, to offer your client a balanced perspective that is targeted towards their specific situation, which will in turn help them to make the right decisions about their path forward.

To get started, I strongly recommend reading my article "[Reading with Reversed Tarot Cards](#)" which is available via my blog or as a bonus chapter of "*The Ultimate Guide to Tarot Card Meanings*". The key components to consider for when interpreting a reversed cards are:

- Traditional reversed Tarot card meanings from your Little White Book (LWB)
- The opposite of the upright card
- An increase or decrease in the energy of the card
- A need to return to the lesson of the previous card
- Blocked or repressed energy
- Delays
- Unconscious awareness
- "No" as an answer to your question

Draw upon these various perspectives to form your own personal reversed Tarot card meanings.

Card Combinations (Upright and Reversed)

When I was writing "*The Ultimate Guide to Tarot Card Meanings*," coming up with Tarot card combinations was one of my favourite activities. It enables you to see the interactions between different cards in a way that may strengthen a specific meaning, add some 'light and shade' to a meaning, or give it a whole different meaning altogether.

To get started, consider the general meaning of the card you are studying. Then, ask yourself:

- What other cards **reinforce** the card's meaning?
- What other cards **oppose** the card's meaning?
- What other cards give this card a completely different meaning?

Alternatively, you may like to randomly select cards from your deck to match with the card in question, and then brainstorm how the two cards combine. Let's say you're working with the Six of Wands, and you randomly select the Page of Swords – what do these two cards mean together? Then, randomly select another card and start building your card combinations in this way.

Use these methods for both upright and reversed Tarot card combinations.

THE MAJOR ARCANA

Overview

SAMPLE ONLY

The Major Arcana Keyword Cheatsheet

Tarot Card	Keywords	Tarot Card	Keywords
 Fool		 Justice	
 Magician		 Hanged Man	
 High Priestess		 Death	
 Empress		 Temperance	
 Emperor		 Devil	
 Hierophant		 Tower	
 Lovers		 Star	
 Chariot		 Moon	
 Strength		 Sun	
 Hermit		 Judgement	
 Wheel of Fortune		 World	



Fool

Keywords

Upright:

Reversed:

Quotes

Description

Upright Tarot Card Meanings

General

SAMPLE ONLY

Career, Work and Finances

Personality Types

Relationships and Love

SAMPLE ONLY

Spirituality

Wellbeing and Health

Suggested Card Combinations

SAMPLE ONLY

Reversed Tarot Card Meanings

Suggested Card Combinations

SAMPLE ONLY



Magician

Keywords

Upright:

Reversed:

Quotes

Description

Upright Tarot Card Meanings

General

SAMPLE ONLY

Career, Work and Finances

Personality Types

Relationships and Love

SAMPLE ONLY

Spirituality

Wellbeing and Health

Suggested Card Combinations

SAMPLE ONLY

Reversed Tarot Card Meanings

Suggested Card Combinations

SAMPLE ONLY

SAMPLE ONLY